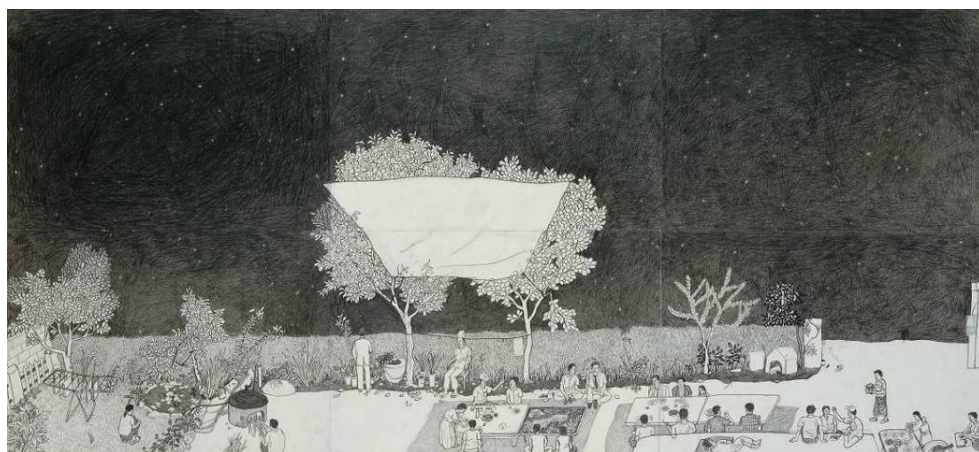


KUKJE GALLERY

Sungsic Moon - Landscape Portrait



별과 소쩍새 그리고 내 할머니
Stars, a Scope Owl and My Grandmother
2007
pencil on paper
48.5 x 106 cm
“Courtesy of Sungsic Moon and Kukje Gallery”

February 24 – April 7, 2011

○ Exhibition Information

Artist: Sungsic Moon (Korean, b.1980)

Title: Landscape Portrait

Duration: February 24 – April 7, 2011

Place: Kukje Gallery, K1 (Tel 735-8449)

Opening hours: Monday-Saturday: 10am-6pm, Sunday: 10am-5pm

KUKJE GALLERY

54 Samcheong-ro, Jongno-gu, Seoul, Korea 110-200 T+82 2 735 8449 F+82 2 733 4879 kukje@kukjegallery.com www.kukjegallery.com

○ Exhibition Introduction

Kukje Gallery is pleased to present Landscape Portrait, Sungsic Moon's first and highly anticipated solo exhibition at the Gallery. Installed in Space I, Moon presents more than fifty drawings and paintings completed since 2007.

Sungsic Moon is best known for paintings based on his memories, life experiences and everyday scenery, all of which are painted with a preternatural realism and detailed precision. As suggested by the title, Landscape Portrait, Moon's compositions capture the facial expressions of his subjects' complicated and often bewildering lives — as if every painting were a psychological topography.

Moon's works include large-scale paintings in addition to drawings, and unlike the artist's previous works on canvas, the new works are all on paper. The artist has created a unique method of creating his ground, joining together sheets of paper so that their seams become indistinguishable and the composition appears to have no beginning or end. This technique is best illustrated in Interior of a Forest where the artist has rendered a seemingly endless expanse of trees, where every leaf has been painted with the same devotion and attention to detail. In addition to creating a sublime tableau, the work frames the artist's interest in Buddhist ideals of introspection and mindfulness. In contrast, the work Texture of the Night seems to have absorbed all of the details visible in Interior of a Forest into darkness. Texture of the Night is drawn from the artist's experience commuting between his home and studio near Inwang Mountain in Buam-dong where Moon was awed by the light and the contrast between night and day. As dusk fell, the shape of the mountain and all of the events that took place during the daylight seemed to disappear into a weighty darkness. The artist, determined to express the sublimity of this shadow that conceals, rendered the landscape in the darkest possible tones, a process that was achievable only through an intense time consuming and meticulous process. Night marks a shift in Moon's oeuvre as it employs the artist's memory as a fundamental point of reference. The mountain landscape is made up of a collection of multiple fragments, presenting seemingly disjointed events – such as the cry of an elk caught in a trap and the sound of broken twigs – in a contiguous composition. More akin to an abstract narrative, Moon is interested in capturing not just his subject, but his personal experiences in the paintings. These phenomenological experiences seem to encounter each other for the first time on the canvas or paper, while at the same time they convey feelings that might be described as inexplicable nostalgia.

Press Release

Sungsic Moon's drawings illustrate events that are not readily revealed in his paintings. For example, Stars, a Scope Owl and My Grandmother alludes to but does not visibly illustrate the artist's experience of his grandmother's death, the mourning process, and funeral held in Gimcheon, his hometown. In this way, Sungsic Moon's works are marked by a deep pathos and reveal his concern for the struggle of all living things, and his innovative techniques hide a more classical attitude and approach to rendering idealized emotions.

Sungsic Moon (born 1980) obtained his BFA at Korea National University of Arts in 2005 and completed his MFA at the same university in 2008. His participation in the exhibition at the Korean Pavilion in Venice Biennale was widely celebrated. In 2006 he held a solo exhibition titled Windless Landscape at KiMi Art gallery and participated in the group exhibition On Painting at Kukje Gallery in 2007. He is currently a third-term artist-in-residence at Mongin Art Space Artists Studio.

KUKJE GALLERY

54 Samcheong-ro, Jongno-gu, Seoul, Korea 110-200 T+82 2 735 8449 F+82 2 733 4879 kukje@kukjegallery.com www.kukjegallery.com

○ Exhibition Images & Captions

Use of images must clearly credit the artist and Kukje Gallery



숲의 내부
Interior of a Forest

2010-2011

acrylic on paper

75 x 428 cm

“Courtesy of Sungsic Moon and Kukje Gallery”



숲의 내부 Interior of a Forest (detail image)

○ Exhibition Images & Captions

Use of images must clearly credit the artist and Kukje Gallery



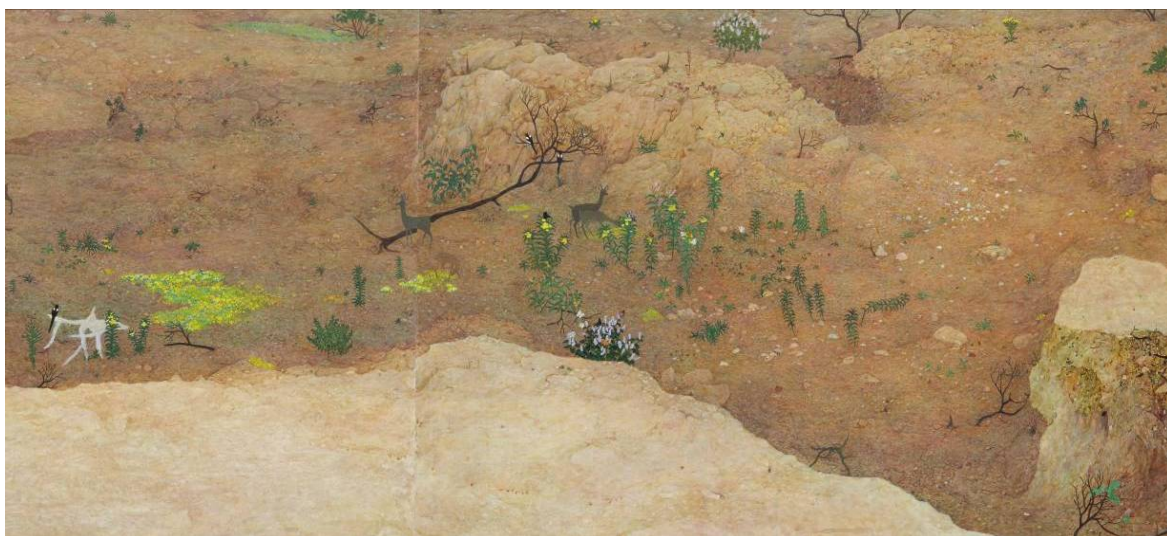
무심한 교차
Absentminded crossing

2008-2010

acrylic on paper

76 x 430 cm

“Courtesy of Sungsic Moon and Kukje Gallery”



무심한 교차 Absentminded crossing (detail image)

○ Exhibition Images & Captions

Use of images must clearly credit the artist and Kukje Gallery



밤
Night
2008

watercolor and pencil on paper
65 x 287 cm

“Courtesy of Sungsic Moon and Kukje Gallery”



밤의 질감
Texture of the Night
2010–2011

acrylic on paper
144 x 298 cm

“Courtesy of Sungsic Moon and Kukje Gallery”

Press Release

○ Exhibition Images & Captions

Use of images must clearly credit the artist and Kukje Gallery



청춘을 돌려다오

Give Me Back My Youth

2010

pencil on canvas

53 x 65.5 cm

“Courtesy of Sungsic Moon and Kukje Gallery”

KUKJE GALLERY

54 Samcheong-ro, Jongno-gu, Seoul, Korea 110-200 T+82 2 735 8449 F+82 2 733 4879 kukje@kukjegallery.com www.kukjegallery.com