

KUKJE GALLERY | PRESS RELEASE

Louise Bourgeois Solo Exhibition *Rocking to Infinity* at Kukje Gallery

Press Conference: September 2, 2025 (Tues.), 11am

Exhibition Dates: September 2–October 26, 2025

Venues: Kukje Gallery K3, *Hanok*

Kukje Gallery is pleased to present Louise Bourgeois's solo exhibition *Rocking to Infinity*, on view in the gallery's K3 and *Hanok* spaces from September 2 to October 26, 2025. The exhibition presents a selection of sculptures and works on paper from the last twenty years of the artist's career. The title, which comes from one of Bourgeois's writings, invokes the image of a mother cradling a child and rocking it to sleep, a blissful moment of security and togetherness.

In K3, fabric suites and works on paper have been wrapped around the four walls of the room to create an immersive environment. The suite *10 AM Is When You Come To Me* (2006) scores the moments of Bourgeois's working relationship with her longtime assistant Jerry Gorovoy through variations of their hands in red gouache. The fabric suite *Hours of the Day* (2006), in which a clock face for every hour is paired with excerpts from her writings, offers a philosophical meditation on time, memory, and emotion. The lower portion of the walls is hung with a selection of late gouaches and watercolors foregrounding the motifs that preoccupied Bourgeois in her later years: the self-portrait, the couple, the mother and child, the good mother, the family, the landscape, and the spiral.

The center of the gallery space is populated by three major sculptures. *Untitled (No. 5)* (1998) memorializes Bourgeois's emotional bond with Gorovoy in monumental form, their posed hands rendered in the pink marble she favored because it reminded her of flesh. In *Fountain* (1999), two streams of water wind down around two spiral mounds before merging in a single stream. The mounds make a figure eight, the symbol of infinity, while the unending flow of the water signifies the passage of time. In *The Couple* (2007–2009), a man and a woman are wrapped together in a spiral that emanates out of the woman's hair. Suspended in a close embrace, they will not be separated again.

The *Hanok* space features a series of drawings on coffee filters made by Bourgeois in 1994 and exhibited here for only the second time. These compositions are unusual for Bourgeois in having a circular format, which may have unconsciously suggested to the artist the face of a clock. As so often in Bourgeois's work, the prevailing iconography hovers between abstract and organic—biomorphic shapes and stains that suggest the natural world and sometimes even landscapes; and sharp-edged geometric forms and a graphic quality that in some ways anticipate the fabric drawings of the 2000s, in which circular compositions radiate outwards from their centers to intersect with other circles. The use of an everyday, domestic coffee filter as drawing paper imbues these intimate works with a diaristic and experimental feel.

About the Artist

Louise Bourgeois (b. 1911, Paris; d. 2010, New York) is recognized as one of the most influential artists of the past century. Though she worked in several mediums throughout her 70-year career—including installation, performance, drawing, painting, and printmaking—she is most known as a sculptor. From poetic drawings to room-sized installations, she physically manifested her anxieties in order to exorcise them. Memory, love, fear, and abandonment are at the core of her complex and renowned body of work. Bourgeois's work can be found in important collections worldwide and has been the subject of several major exhibitions, including those recently organized by the Metropolitan Museum of Art, New York, USA; Belvedere Museum, Vienna, Austria; Art Gallery of New South Wales, Sydney, Australia; Mori Art Museum, Tokyo, Japan; and Fubon Art Museum, Taipei, Taiwan.

Please note that these guidelines below apply exclusively to media outlets based in Korea. Regarding image usage guidelines for overseas press, please contact the Artists Rights Society (ARS).

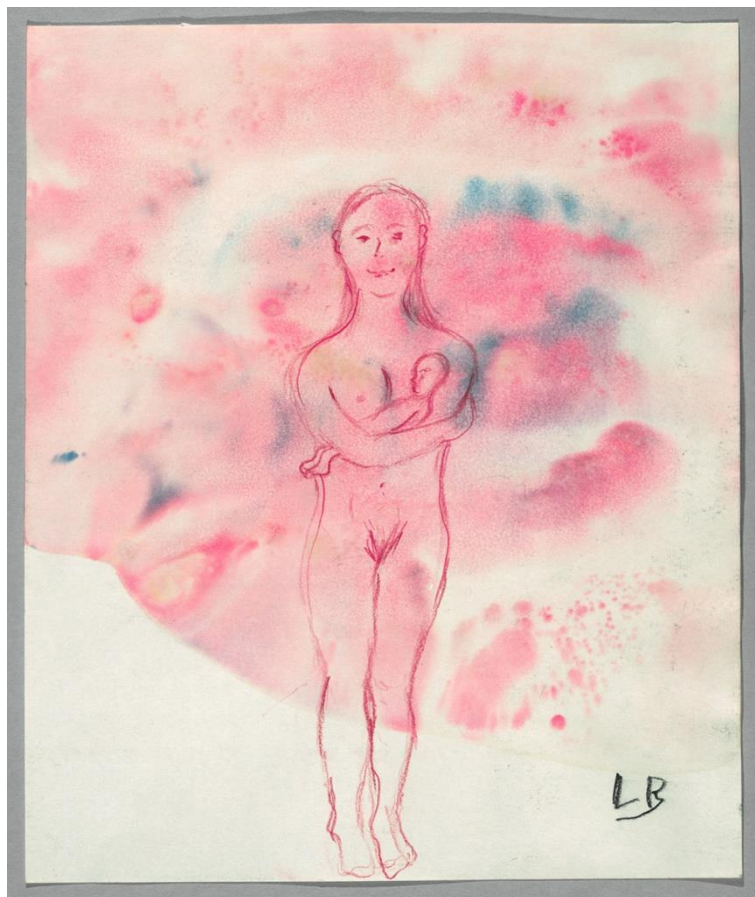
■ Copyright Notice from the Society of Artist's Copyright of Korea (SACK)

- The images below are provided solely for the purpose of introducing Louise Bourgeois's solo exhibition *Rocking to Infinity* at Kukje Gallery.
- For exhibition-related articles, copyright fees are waived for up to two images per article, provided that in print media, each image does not exceed one-quarter of a page.
- Any use beyond these limits (e.g., more than two images, exceeding the size limit in print, or using for purposes other than introducing the exhibition) requires prior copyright permission from SACK.

Copyright for the works of Louise Bourgeois is represented and managed by SACK. For copyright inquiries and permissions, please contact:

Society of Artist's Copyright of Korea (SACK)

Email: copyright@sack.or.kr



Louise Bourgeois (1911–2010)

Mother and Child

2007

Colored pencil and watercolor on paper

24.1 x 20.3 cm

© The Easton Foundation/(Licensed by VAGA at ARS, New York),/(SACK, Korea)

Photo: Christopher Burke

Image provided by Kukje Gallery



Louise Bourgeois (1911–2010)

10 AM Is When You Come To Me (detail)

2006

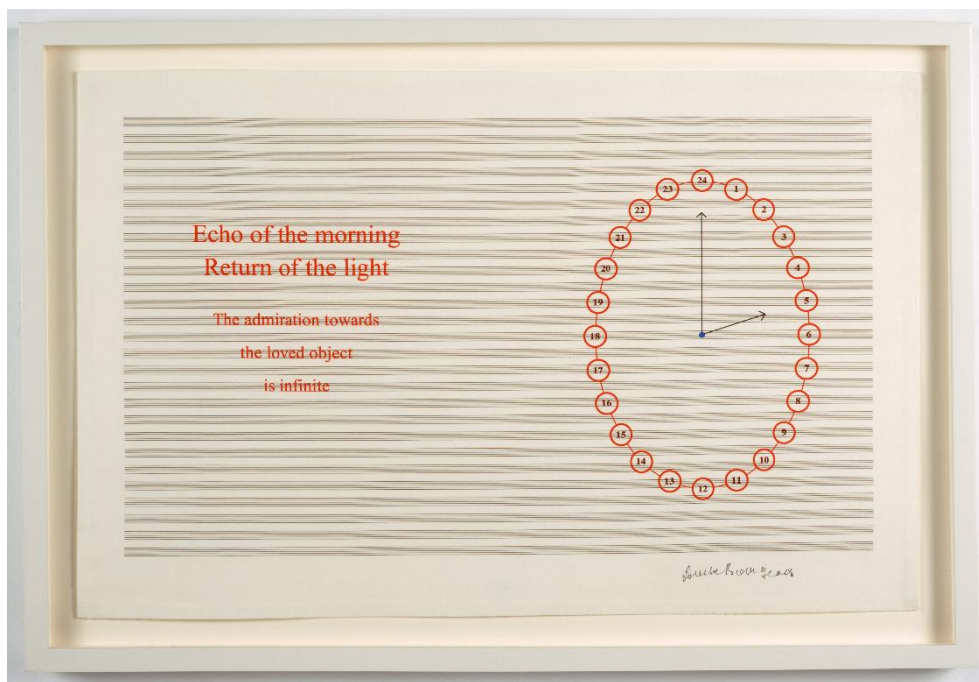
Etching, watercolor and pencil on paper, 20 sheets

38.1 x 90.8 cm, each sheet

© The Easton Foundation/(Licensed by VAGA at ARS, New York),/(SACK, Korea)

Photo: Christopher Burke

Image provided by Kukje Gallery



Louise Bourgeois (1911–2010)

Hours of the Day (detail)

2006

Digital print on fabric, suite of 25

44.5 x 68.6 cm, each sheet

© The Easton Foundation/(Licensed by VAGA at ARS, New York),/(SACK, Korea)

Photo: Christopher Burke

Image provided by Kukje Gallery



Louise Bourgeois (1911–2010)

Fountain

1999

Aluminum, black with silver highlights, and water

167.6 x 205.7 x 129.5 cm

© The Easton Foundation/(Licensed by VAGA at ARS, New York),/(SACK, Korea)

Photo: Peter Bellamy

Image provided by Kukje Gallery



Louise Bourgeois (1911–2010)

The Couple

2007–2009

Cast and polished aluminum, hanging piece

154.9 x 76.2 x 66 cm

© The Easton Foundation/(Licensed by VAGA at ARS, New York),/(SACK, Korea)

Photo: Christopher Burke

Image provided by Kukje Gallery



Louise Bourgeois (1911–2010)

Untitled

1994

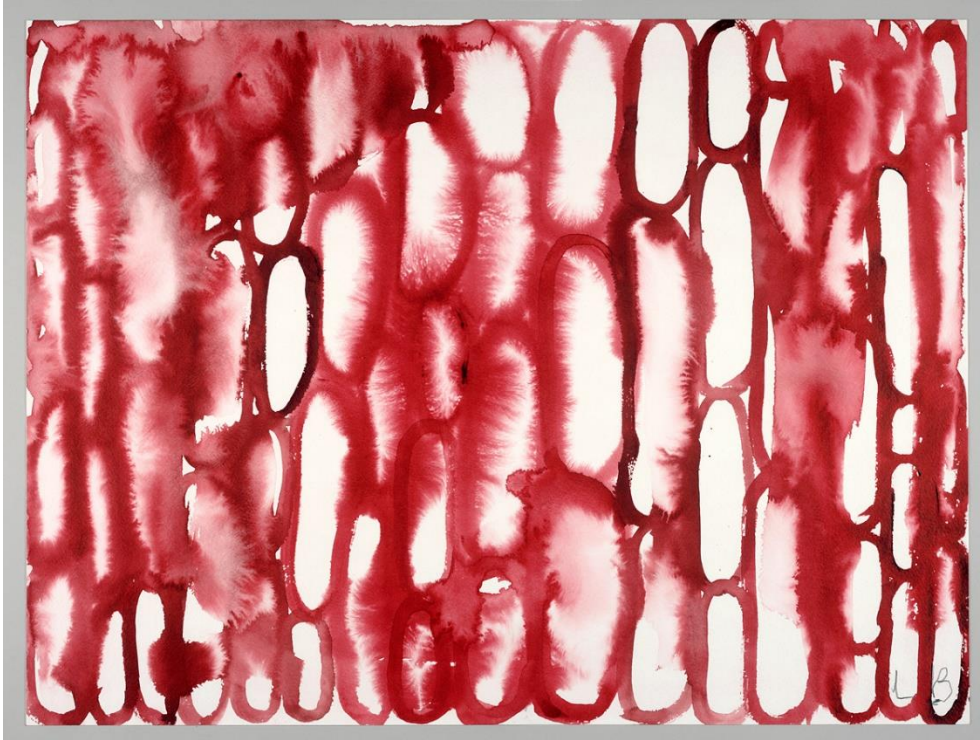
Watercolor and ink on paper

31.4 x 31.4 cm

© The Easton Foundation/(Licensed by VAGA at ARS, New York),/(SACK, Korea)

Photo: Christopher Burke

Image provided by Kukje Gallery



Louise Bourgeois (1911–2010)

Rouge (detail)

2008

Gouache on paper, suite of 10

45.7 x 61 cm, each sheet

© The Easton Foundation/(Licensed by VAGA at ARS, New York),/(SACK, Korea)

Photo: Christopher Burke

Image provided by Kukje Gallery

The above press release is **under embargo** until the end of the relevant press conference.
Copyright and credit line **must be placed adjacent to or near** the reproduced images.
Images may be used solely during the relevant exhibition period for promotional purposes only,
and **may not be edited** without prior permission.

High-resolution images are available for download via Webhard.
WWW.WEBHARD.NET | ID: kukjegallery | PW: kukje

KUKJE GALLERY | COMMUNICATIONS

T +82 2 3210 9807 | press@kukjegallery.com

KUKJE GALLERY

54 SAMCHEONG-RO, JONGNO-GU SEOUL, 03053 KOREA
T + 82 2 735 8449 | F + 82 2 733 4879 | WWW.KUKJEGALLERY.COM

Louise Bourgeois Solo Exhibition *Rocking to Infinity* at Kukje Gallery